

Car Parking Guide

Event categories

TEC events are categorised into three levels, A (>12000 visitors), B (<10000 visitors) and C (<5000 visitors). The visitor numbers information should be captured and issued, together with opening times, to Titanic Quarter Ltd to inform the operational plan for car parking service.

Category A (>12,000 visitors)

Category B (>10,000 visitors)

Category C (>5,000 visitors)

Category C Events

Utilise public car parks along the Queen's Road filling up in priority order as detailed below:

1. Surface Car Park 2 (adjacent to T13) 165 no spaces
2. Surface Car Park 1 (Cast & Crew) 118 no spaces
3. Underground (Titanic Signature Building) 500 no spaces

Category B Events

Utilise public car parks along the Queens Road filling up in priority order as detailed below:

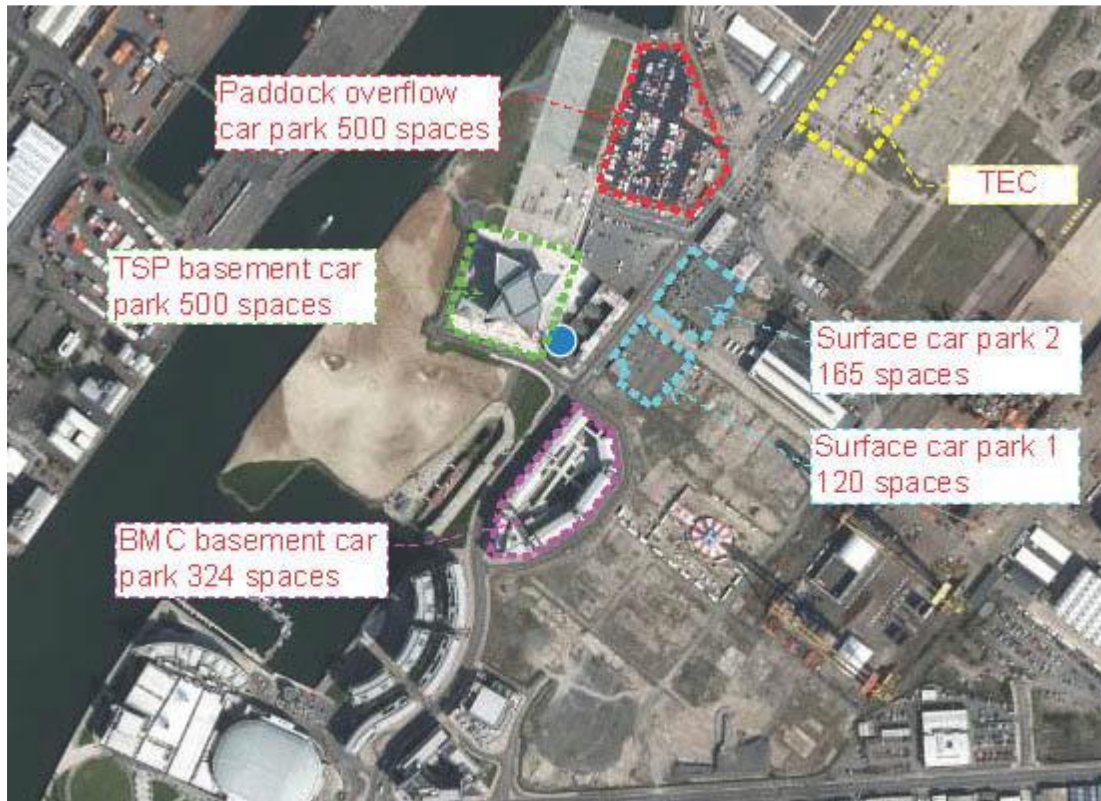
1. Paddock
2. Surface Car Park 2 (adjacent to T13) 165 no spaces
3. Surface Car Park 1 (Cast & Crew) 118 no spaces
4. Underground (Titanic Signature Building) 500 no spaces
5. Belfast Met 324 no Spaces (Weekend openings by prior arrangement)

Category A Events

Utilise the Paddock and public car parks along the Queens Road filling up in priority order as detailed below:

1. Paddock
2. Surface Car Park 2 (adjacent to T13) 165 no spaces
3. Surface Car Park 1 (Cast & Crew) 118 no spaces
4. Underground (Titanic Signature Building) 500 no spaces
5. Belfast Met 324 no Spaces (weekend openings by prior arrangement)

All car parks operate on a first come first served basis. No advance bookings are possible.



Paddock Overflow Car Park

- Opposite TEC
- Parking charge - £5.00 flat fee
- Payment by cash only

Surface Car Parks

- 150m from TEC
- Parking charge - £1.50 first hr, £1.00 every hr thereafter (Category A events £5.00 flat fee)
- Payment by cash at pay machines (coins only)

Titanic Belfast Basement Car Park

- 150m from TEC
- Parking charge - £1.50 first hr, £1.00 every hr thereafter
- Payment by cash (notes and coins) and credit card at pay stations

Belfast Met (BMC) Basement Car Park

- 250m from TEC
- Parking charge - £1.00 first hr, £1.00 every hr thereafter (Category A events £5.00 flat fee)
- Payment by cash (notes and coins) and credit card at pay stations